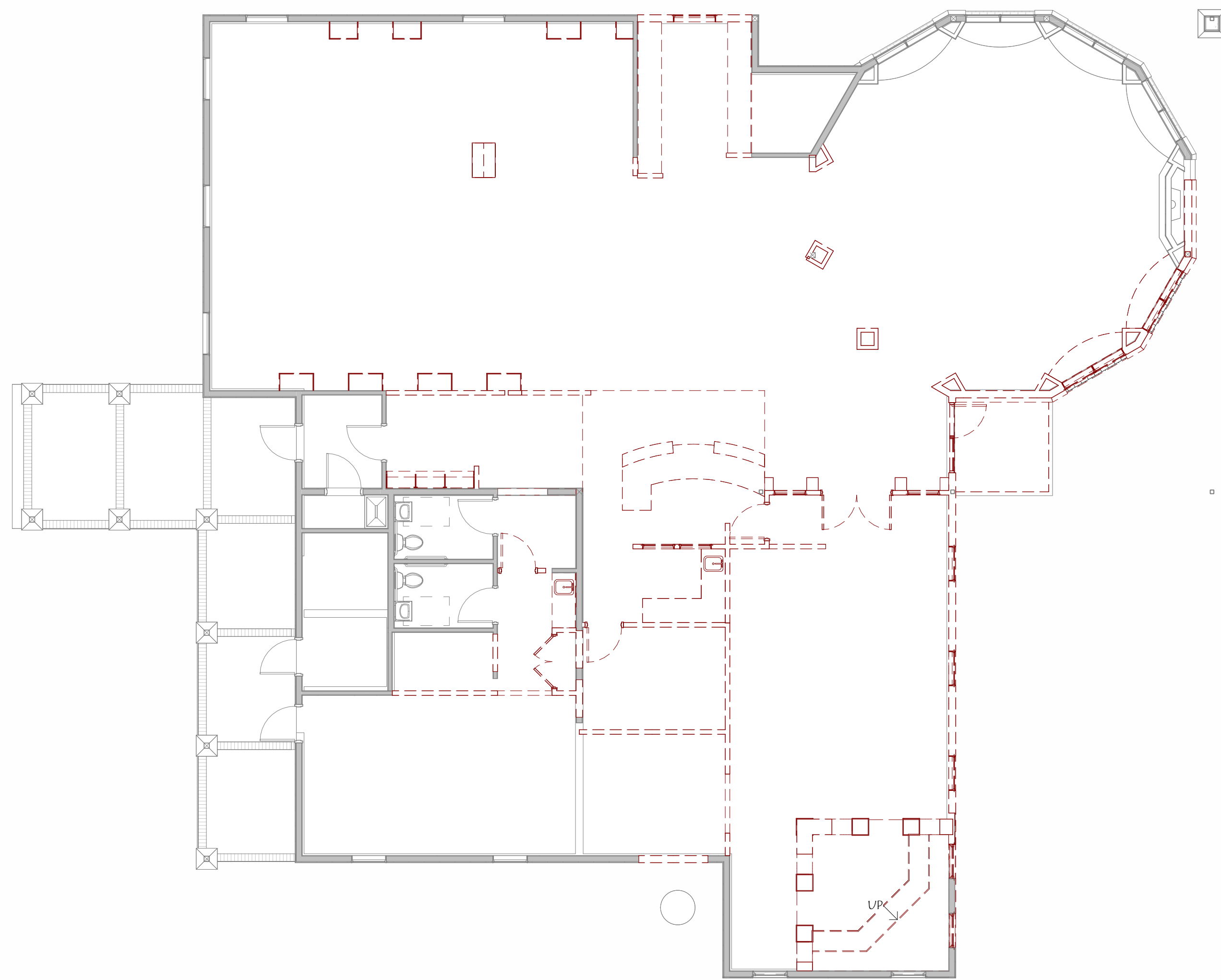
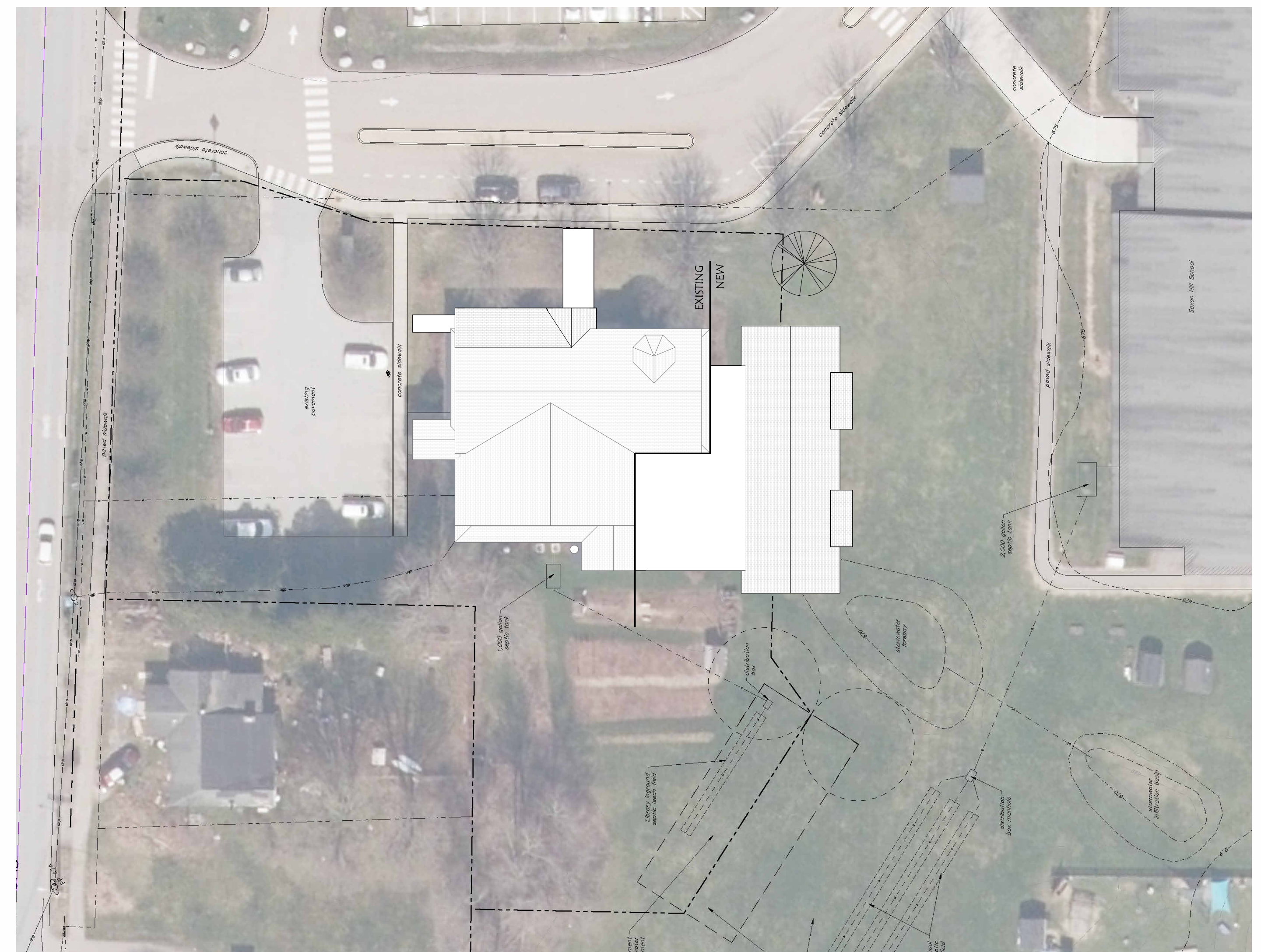




3 ENTRY ELEVATION STUDY  
P-01B 1" = 10'-0"



1 LEVEL 1 DEMO  
P-01B 1/8" = 1'-0"

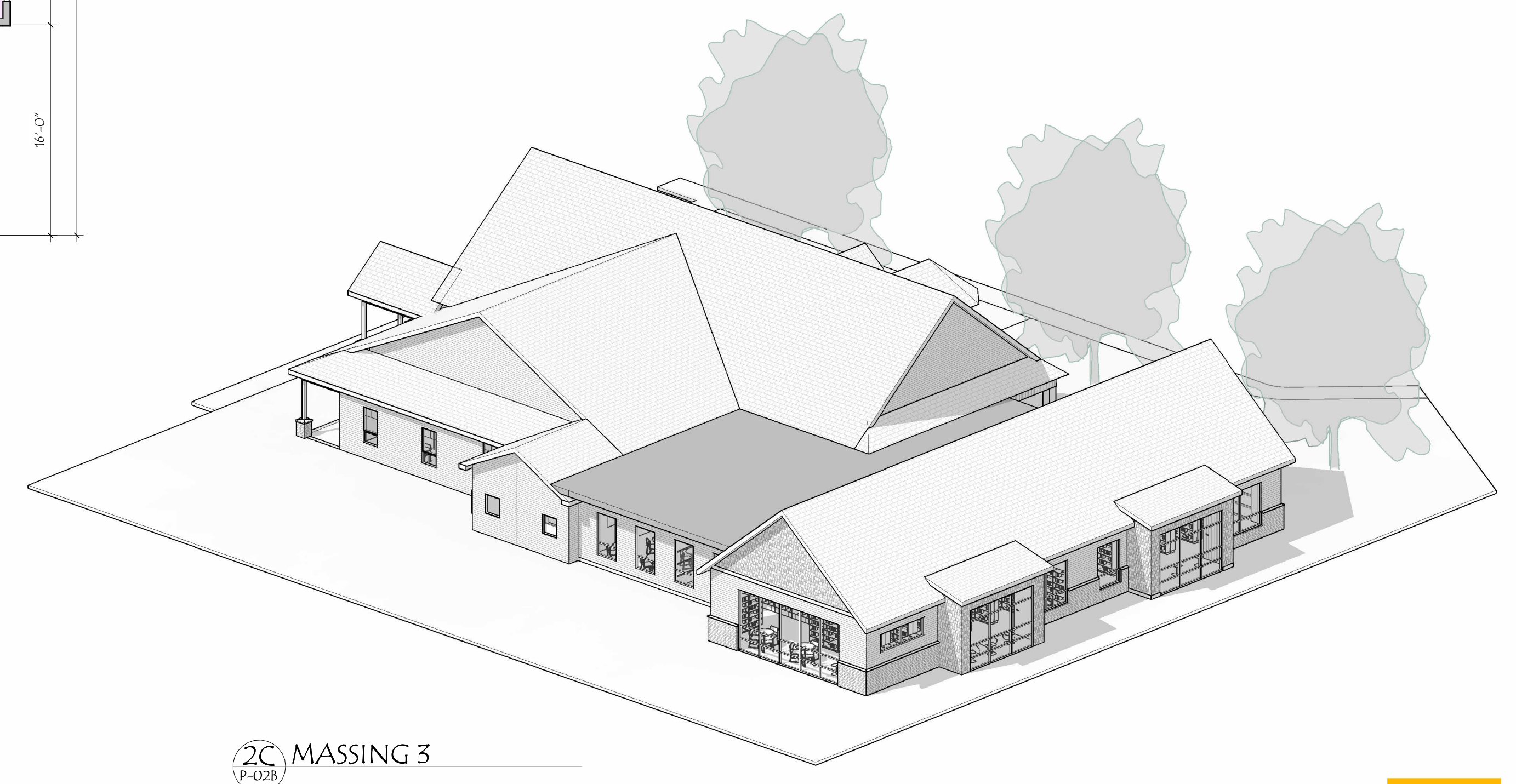
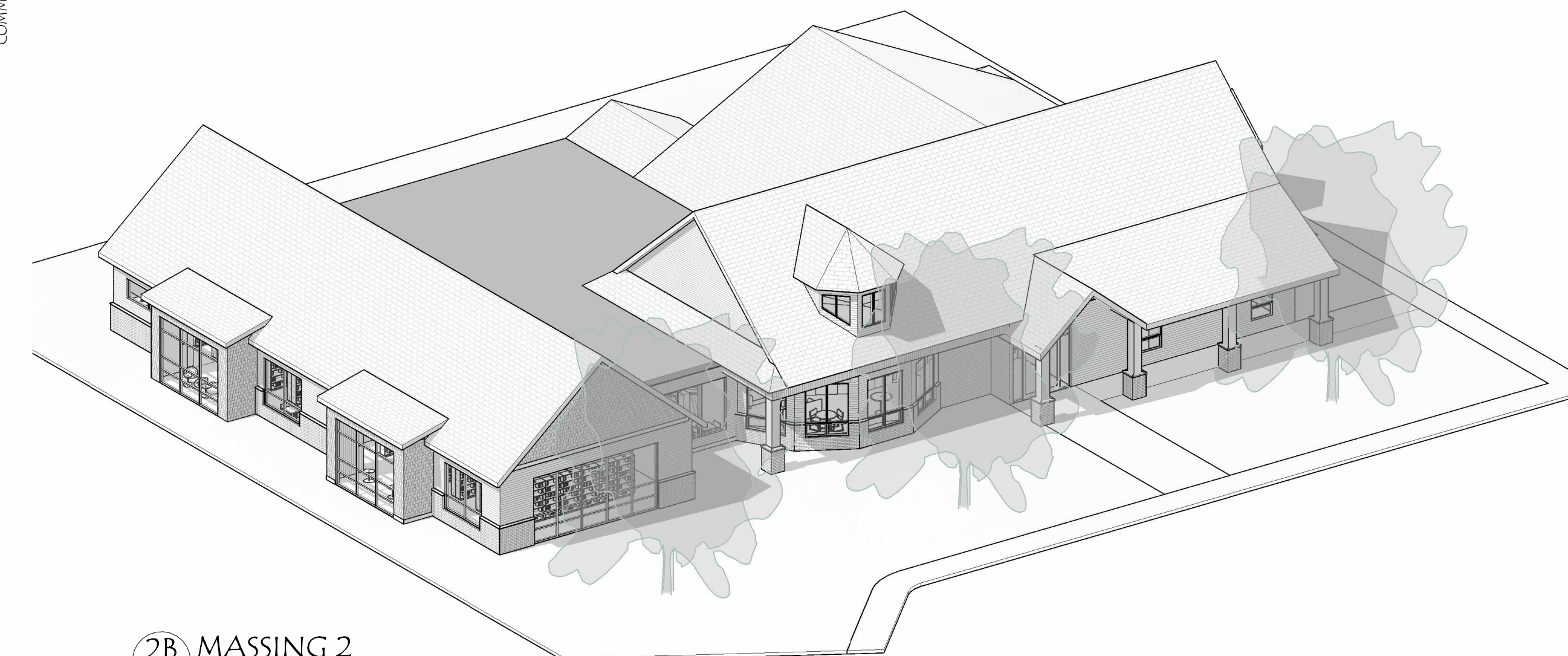
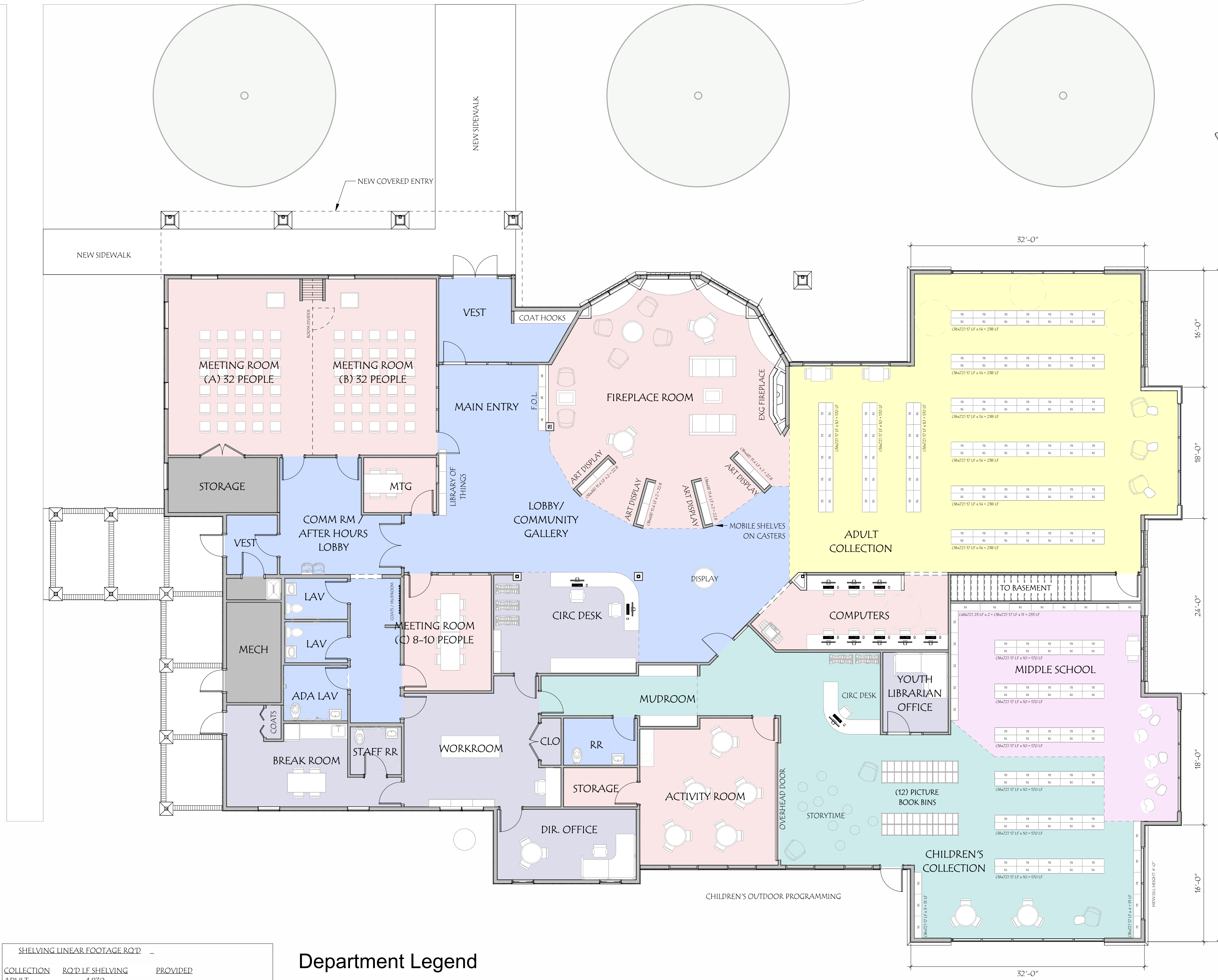


EXISTING: 5,025 ft<sup>2</sup>  
SCHEME B1: 5,225 ft<sup>2</sup>  
TOTAL: 10,250 ft<sup>2</sup>

2 SITE  
P-01B 1" = 50'-0"

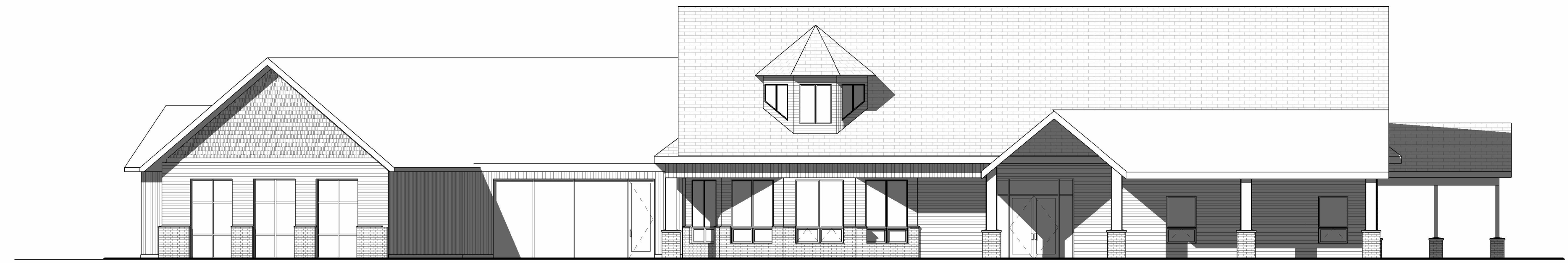
FILENAME: C:\Users\jbarrett\Documents\2025028 - DRML\_R08\_ARCH\_SD\_SCHEME B1\_BARRETT222.rvt

PRINTED: 2/16/2025 1:13:47 PM

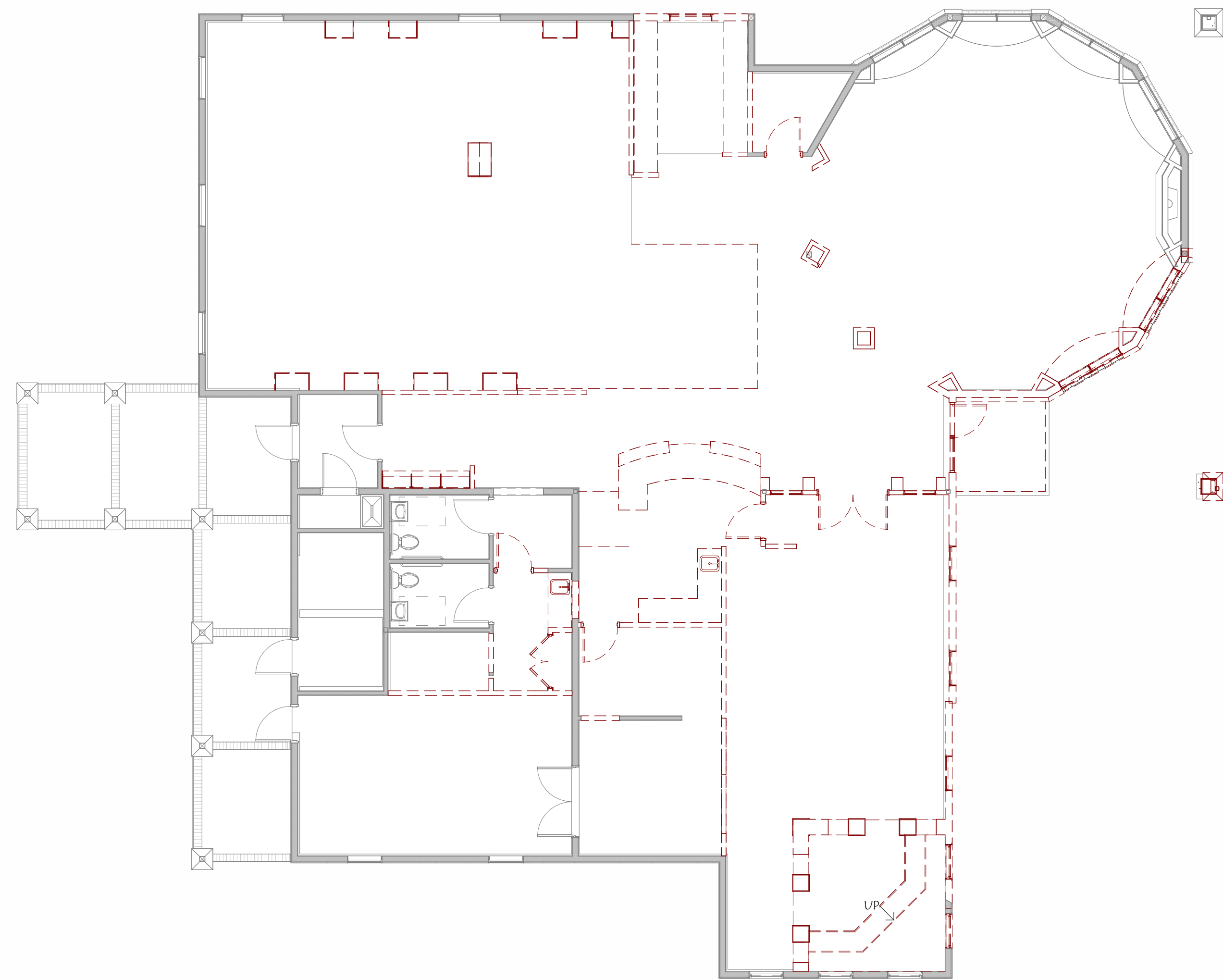


FILENAME: C:\Users\jbarrett\Documents\20250208 - DRML\_R08\_ARCH\_SD\_SCHEME B1 - BARRETT222.rvt PRINTED: 2/16/2026 1:14:18 PM

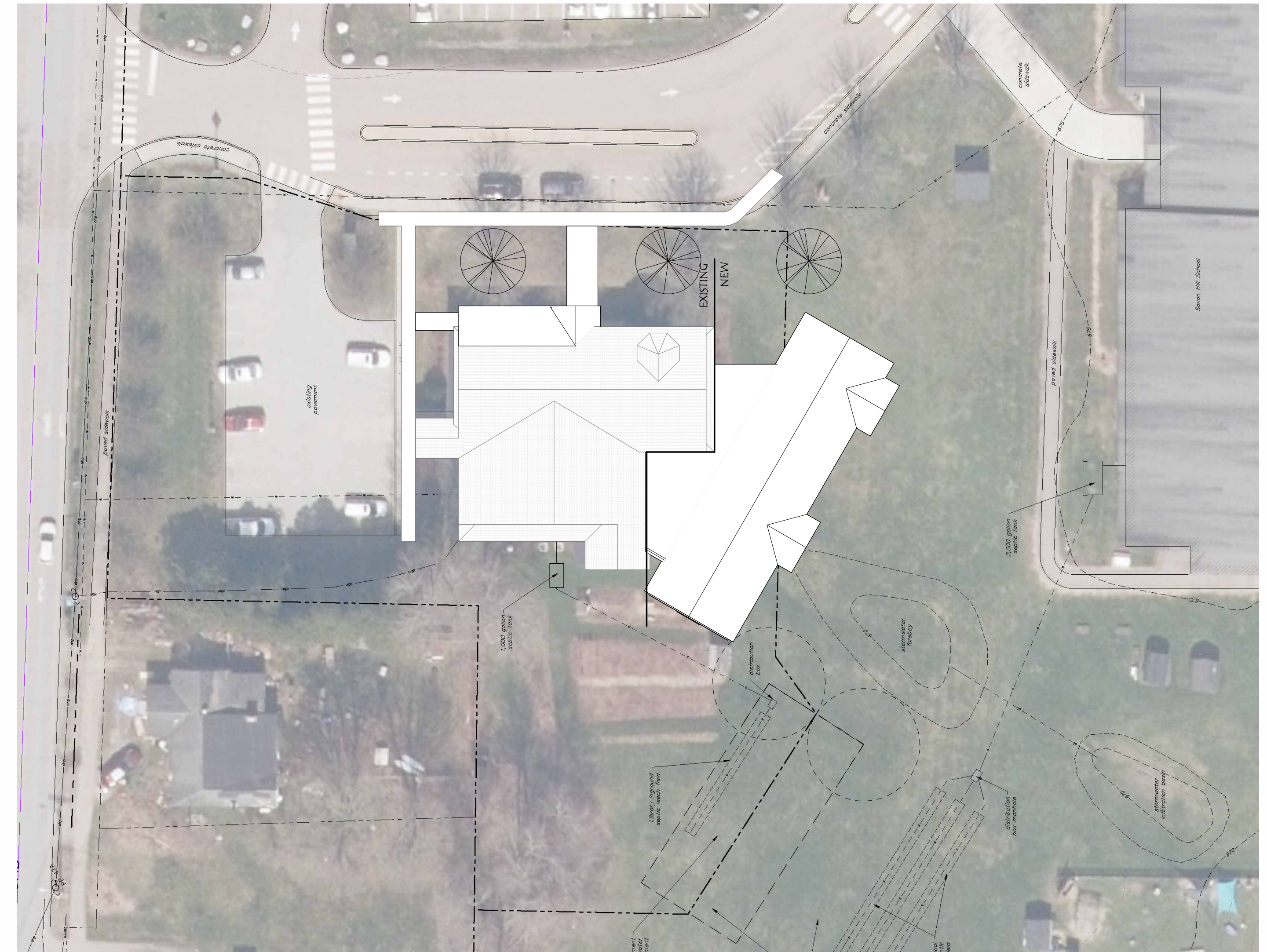




3 ENTRY ELEVATION STUDY  
P-01A 1" = 10'-0"



1 LEVEL 1 DEMO  
P-01A 1/8" = 1'-0"



EXISTING: 5,025 ft<sup>2</sup>  
SCHEME B1: 5,167 ft<sup>2</sup>  
TOTAL: 10,192 ft<sup>2</sup>

2 SITE PLAN  
P-01A 1" = 30'-0"

FILENAME: C:\Users\jbarrett\Documents\2025028 - DRML\_R08\_ARCH\_SD\_SCHEME D1\_IBARRETT222.rvt

PRINTED: 2/16/2026 1:18:52 PM

